

*New Jersey Semi-Conductor Products, Inc.*

20 STERN AVE.  
 SPRINGFIELD, NEW JERSEY 07081  
 U.S.A.

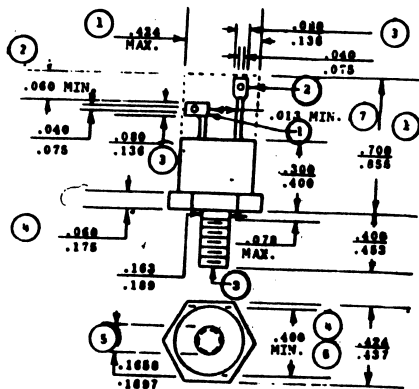
TELEPHONE: (973) 376-2922  
 (212) 227-6005  
 FAX: (973) 376-8960

2N1604  
 SCR, V(DRM) = 400 V TO 499.9 V

Description: SCR, V(DRM) = 400 V to 499.9 V

Manufacturer.....	
Mil/High-Rel? (Y/N).....	
V(drm) Max.....	400
It(stat) Max. (A).....	3.0
@Temp. (test) (°C).....	80#
Supp Curr. I(TSM).....	25N
Firing Char-Iqt Max.....	10m
Firing Char-Vqt Max.....	3.0
Id(off) Max. (A).....	1.0m
@Temp. (test) (°C).....	125#
I(h) Max. (A).....	25m
V(T) Max.....	2.0
@It (A).....	3.0
Dv/Dt Worst Case.....	
t(switch) Off Typ. Time (S)....	
@It (test) (A).....	
t(switch) Off Typ. Time (S)....	
Oper. Temp (°C) Min.....	-60
Oper. Temp (°C) Max.....	125#
Pkg Style.....	TO-64
Surface Mounted (Y/N).....	N

# Case Temperature N @ above 125°C    ⚡ It(rms)



NOTES

1. The outline contour with exception of hexagon is optional within zone or dimension specified.
2. Minimum difference in terminal lengths to establish datum line for numbering terminals.
3. Contour and orientation of fixed terminal lugs are optional.
4. A chamfer (or undercut) on one or both ends of hexagonal portion is optional
5. Pitch diameter - thread 10-32 UNF-2A (coated). Reference (screw thread standards for federal services - handbook H-28.
6. Minimum diameter of seating plane.
7. Minimum spacing between terminals.



Quality Semi-Conductors